

# NAS 104

## Introduction to Sleep Mode

Learn to use Sleep Mode  
with your ASUSTOR NAS

ASUSTOR COLLEGE

## COURSE OBJECTIVES

Upon completion of this course you should be able to:

1. Have a basic understanding of System Sleep Mode and disk hibernation
2. Place the NAS into Sleep Mode and wake it from Sleep Mode

## PREREQUISITES

*Course Prerequisites :*

None

*Students are expected to have a working knowledge of:*

N/A

## OUTLINE

### 1. About Sleep Mode

#### 1.1 What is Sleep Mode?

### 2. Placing the NAS into Sleep Mode

#### 2.1 Placing the NAS into Sleep Mode via ADM

#### 2.2 Placing the NAS into Sleep Mode via ASUSTOR Control Center

#### 2.3 Placing the NAS into Sleep Mode via ASUSTOR Portal

#### 2.4 Placing the NAS into Sleep Mode via AiMaster

#### 2.5 Placing the NAS into Sleep Mode via the power button

### 3. Waking the NAS from Sleep Mode

#### 3.1 Using the ASUSTOR Remote to wake your NAS

### **3.2 Using AiMaster to wake your NAS**

### **3.3 Using the power button to wake your NAS**

# 1. About Sleep Mode

## 1.1 What is Sleep Mode?

ASUSTOR NAS is the first NAS in the world to feature System Sleep Mode (S3). When their NAS devices are not in use, users can put them into Sleep Mode in order to significantly lower power consumption. When users need to access the NAS again, they will be able to wake it from Sleep Mode in 10 seconds or less.

In addition to Sleep Mode, ASUSTOR NAS also provides disk hibernation for hard disks that are not in use. During disk hibernation, the system will remain powered on while the hard disks hibernate to save power. Power consumption for each ASUSTOR NAS model during normal operation, disk hibernation and Sleep Mode is summarized in the tables below. You can see that putting your NAS into Sleep Mode will allow it to consume significantly less power.

### Power Consumption for ASUSTOR NAS Devices:

	AS-202T	AS-204T	AS-202TE	AS-204TE	AS -204RS
Operation	19.7 W	34 W	19.7 W	36.1 W	41.6 W
Disk Hibernation	12.9 W	21.5 W	13 W	22.6 W	25.8 W
Sleep Mode (S3)	0.8 W	0.8 W	0.8 W	0.8 W	0.7 W

	AS-302T	AS-304T
Operation	19.9 W	36.7 W
Disk Hibernation	13.4 W	23.6 W
Sleep Mode (S3)	0.8 W	0.8 W

	AS-602T	AS-604T	AS-606T	AS-608T
Operation	25 W	40.8 W	49.5 W	57.2 W
Disk Hibernation	18 W	25.3 W	30.9 W	32.8 W
Sleep Mode (S3)	1.4 W	1.4 W	1.4 W	1.4 W

	AS-604RS	AS-604RD	AS-609RS	AS-609RD
Operation	41.3 W	46 W	58.7 W	73.5 W
Disk Hibernation	31.6 W	32.3 W	32.8 W	44.9 W
Sleep Mode (S3)	1.4 W	6.42 W	1.4 W	2.02 W

## 2. Placing the NAS into Sleep Mode

### 2.1 Placing the NAS into Sleep Mode via ADM

#### STEP 1

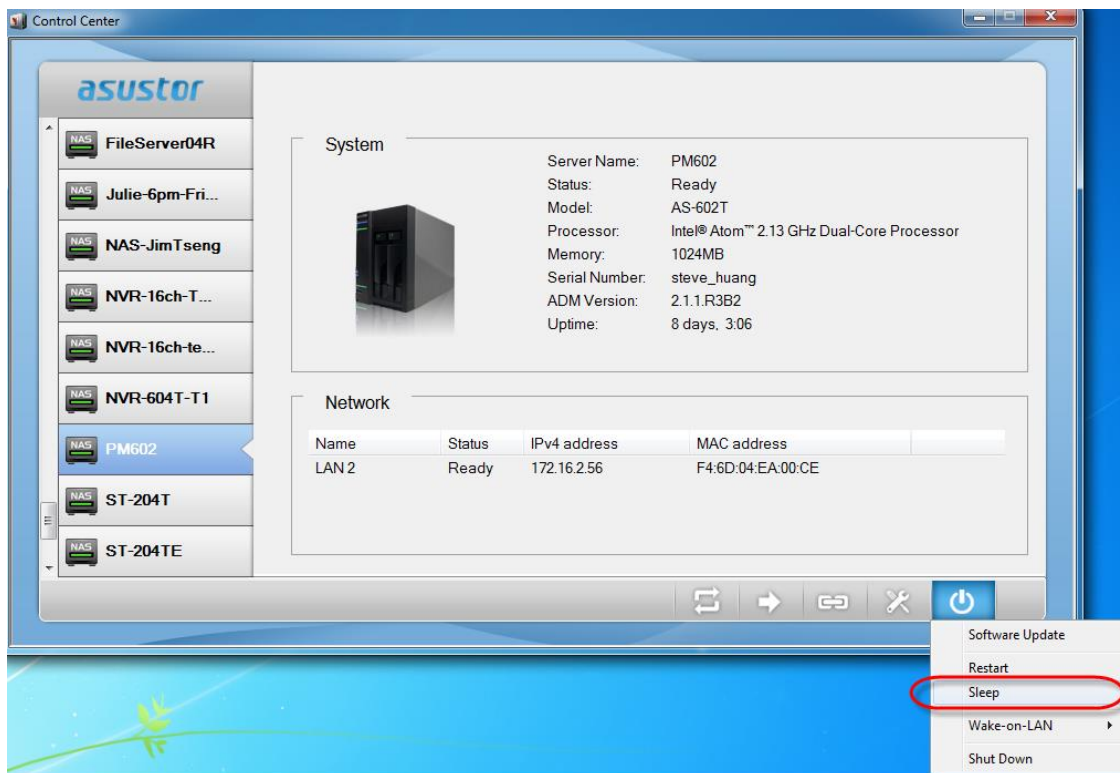
You can select **[Sleep]** from the menu in the upper right-hand corner of the ADM interface to place the NAS into Sleep Mode.



## 2.2 Placing the NAS into Sleep Mode via ASUSTOR Control Center

### STEP 1

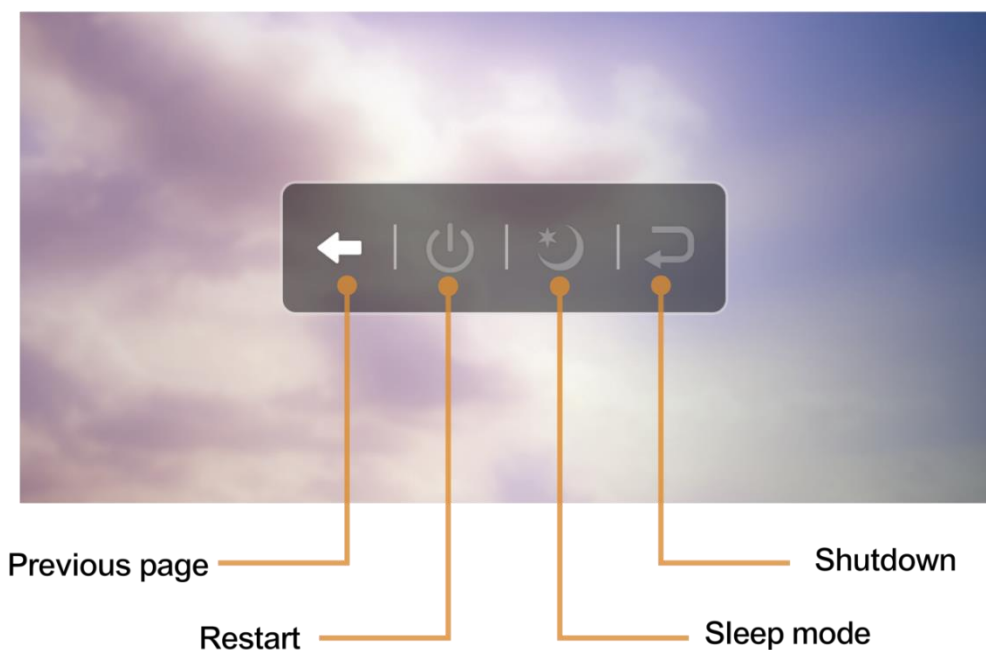
To use ASUSTOR Control Center to place your NAS into Sleep Mode, select your NAS from the left-hand panel, click on the **“Action”** button and then select **[Sleep]**.



## 2.3 Placing the NAS into Sleep Mode via ASUSTOR Portal

### STEP 1

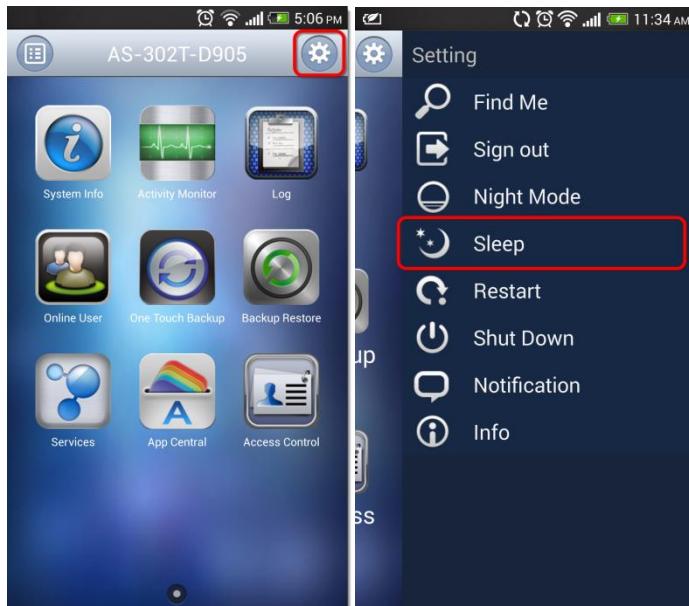
Selecting the Sleep icon from the power control menu in ASUSTOR Portal will allow you to place your NAS into Sleep Mode.



## 2.4 Placing the NAS into Sleep Mode via AiMaster

### STEP 1

In order to use AiMaster to shut down your NAS, first log in to your NAS with AiMaster. Next, select the **“Settings”** icon and then select **[Sleep]** from the menu.

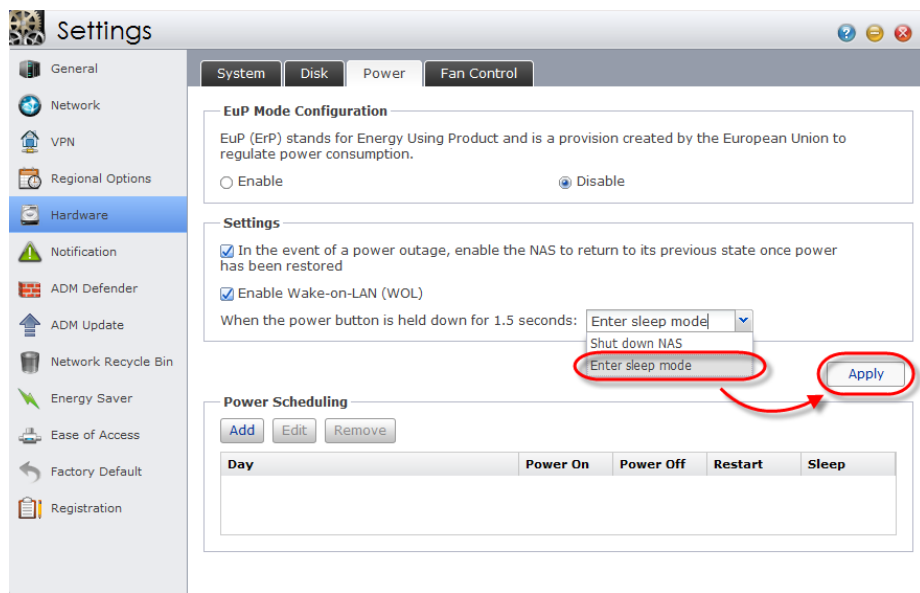




## 2.5 Placing the NAS into Sleep Mode via the power button

### STEP 1

You will first need to configure the power button. Log into ADM and select **[Settings] → [Hardware] → [Power]**. Under the “Settings” section select **[Enter sleep mode]** from the drop-down menu for “When the power button is held down for 1.5 seconds:”. Click on **[Apply]** once you are done.



### STEP 2

Hold down the power button (found on the front of the NAS) for 1.5 seconds to place the NAS into Sleep Mode.



## 3. Waking the NAS from Sleep Mode

### 3.1 Using the ASUSTOR Remote to wake your NAS

If your NAS has an infrared receiver, you will be able to use the ASUSTOR Remote to wake it from Sleep Mode.

#### STEP 1

Point the remote at the infrared receiver on the NAS and then push the power button on the remote to wake the NAS from Sleep Mode.



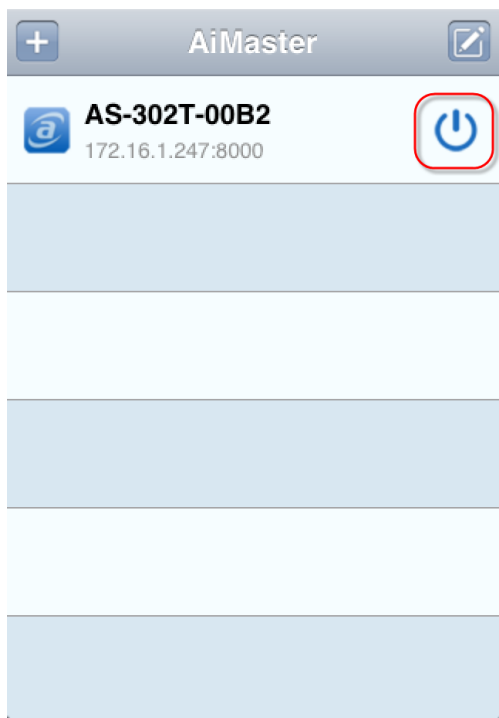
### 3.2 Using AiMaster to wake your NAS

Before using AiMaster to wake your NAS from Sleep Mode, please ensure that:

- You have logged into your NAS using AiMaster and have added it to the server list
- Your NAS and AiMaster are on the same local network

#### STEP 1

Find your NAS in AiMaster's NAS server list. Select the **"Wake"** button found to the right of the name of the NAS and then select **[OK]** to confirm that you want to wake your NAS.



### 3.3 Using the power button to wake your NAS

#### STEP 1

Push the power button (found on the front of the NAS) to wake the NAS from Sleep Mode.

